

## 3D SCANNING FOR LARGE SCALE OBJECTS

### LASER SCANNER & DRONE

For photogrammetry



#### Laser scanner Technical Specifications:

Range (single scan)	79 metres
Acquisition time (single scan)	3'22"
Accuracy:	±0.4 mm at 10mt
Acquisition speed	508.000 pxl/sec
Resolution	1 point every 1.5mm

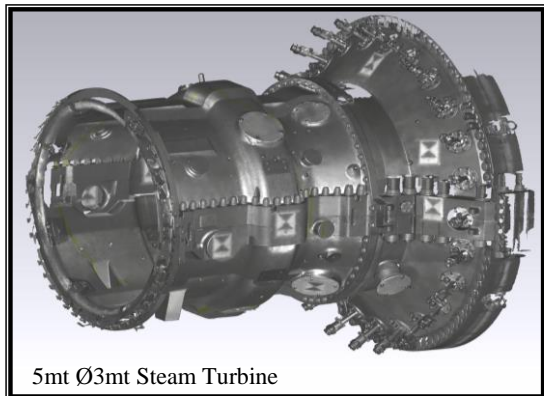
**Not affected by direct sunlight or total darkness**

**Laser system based on return wave phase shifting**

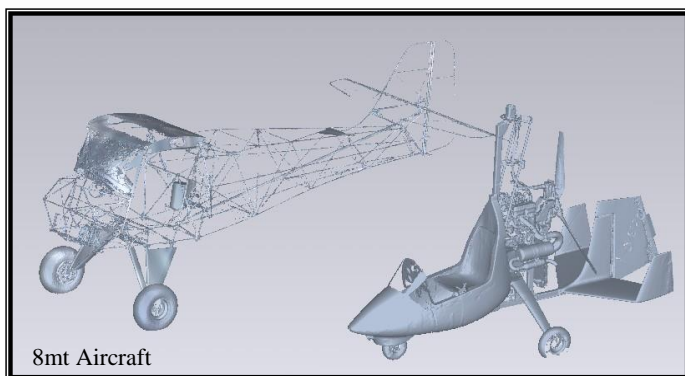
**3R Safety Certificate and Calibration Certificate**



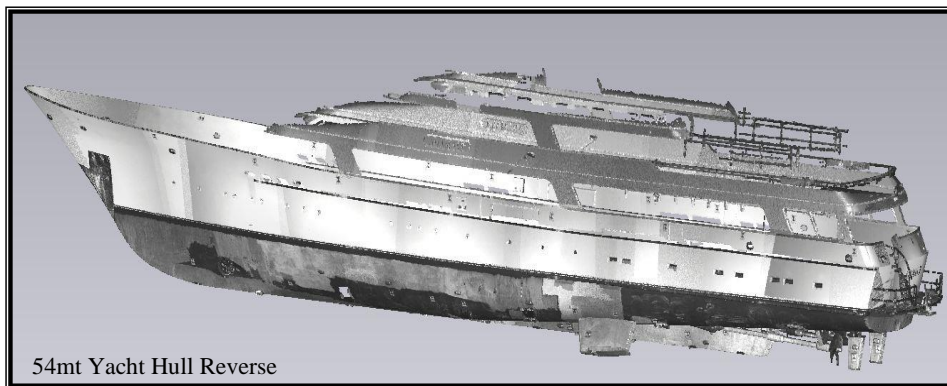
## ***Examples of Applications***



5mt Ø3mt Steam Turbine



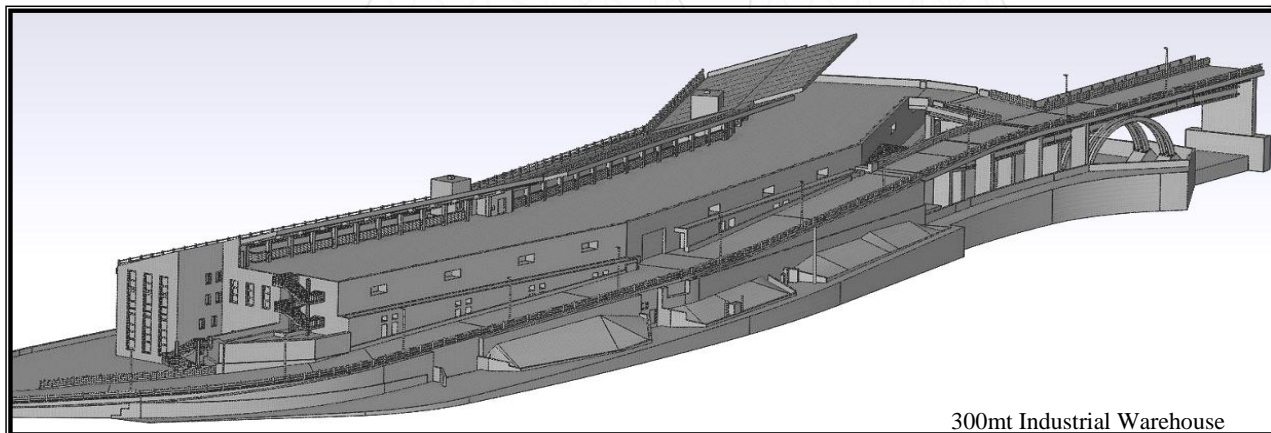
8mt Aircraft



54mt Yacht Hull Reverse



20mt yacht bridge



300mt Industrial Warehouse