

## LASER SCANNER

### Three Dimensional Optical Touch System For Large Scale objects



#### Technical Specifications:

Range (single scan)	79 metres
Acquisition time (single scan)	3'22"
Accuracy:	±0.4 mm at 10mt
Acquisition speed	508.000 pxl/sec
Resolution	1 point every 1.5mm

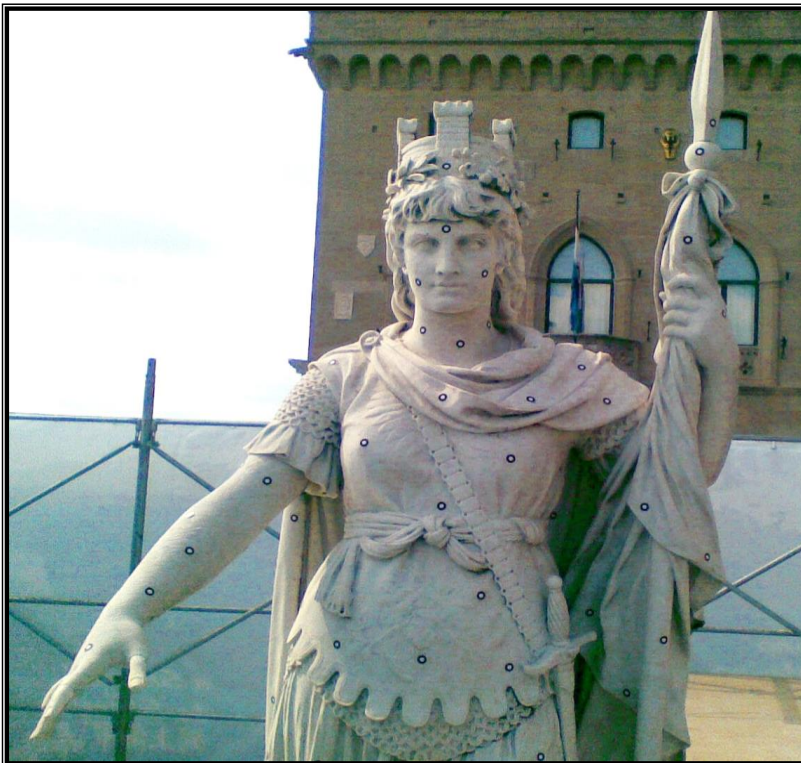
**Not affected by direct sunlight or total darkness**



**Laser system based on return wave phase shifting**



**3R Safety Certificate and Calibration Certificate**



Statue of Liberty – San Marino

## Examples of Applications



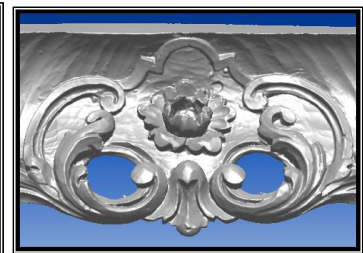
3D Scanning Abbey Church



Scan of a bas-relief



Human scanning



Artistic Detail



Color Scanning  
of a Statuette



*Quick Acquisitions of Details and Colors*

*Optical Scanner*