

3D SCANNING FOR LARGE SCALE OBJECTS

LASER SCANNER & DRONE

For photogrammetry



Laser scanner Technical Specifications:

Range (single scan)	79 metres
Acquisition time (single scan)	3'22"
Accuracy:	±0.4 mm at 10mt
Acquisition speed	508.000 pxl/sec
Resolution	1 point every 1.5mm

Not affected by direct sunlight or total darkness



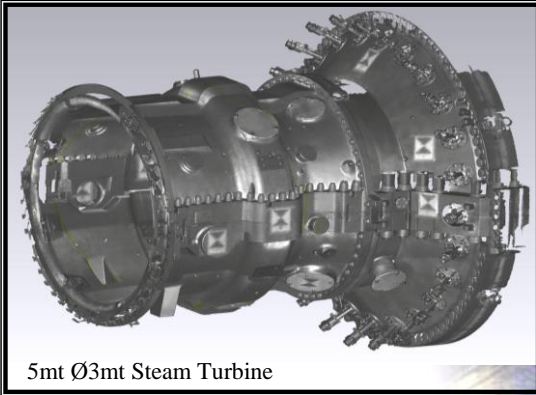
Laser system based on return wave phase shifting



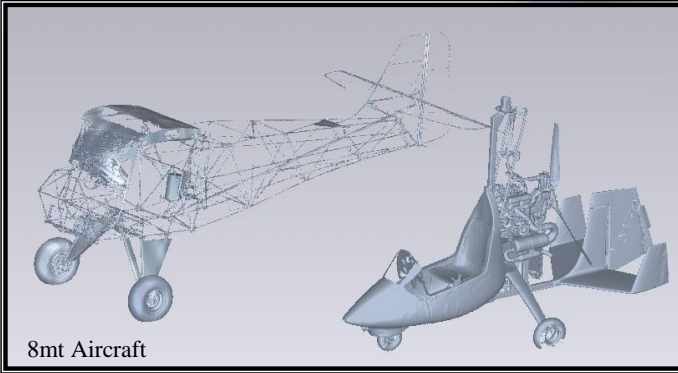
3R Safety Certificate and Calibration Certificate



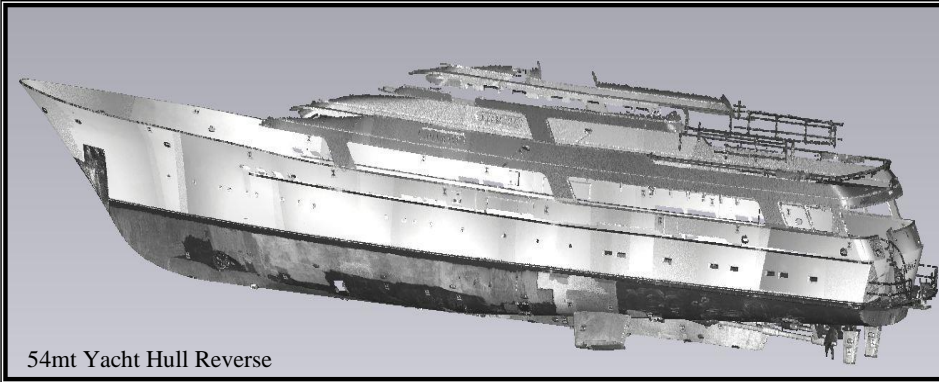
Examples of Applications



5mt Ø3mt Steam Turbine



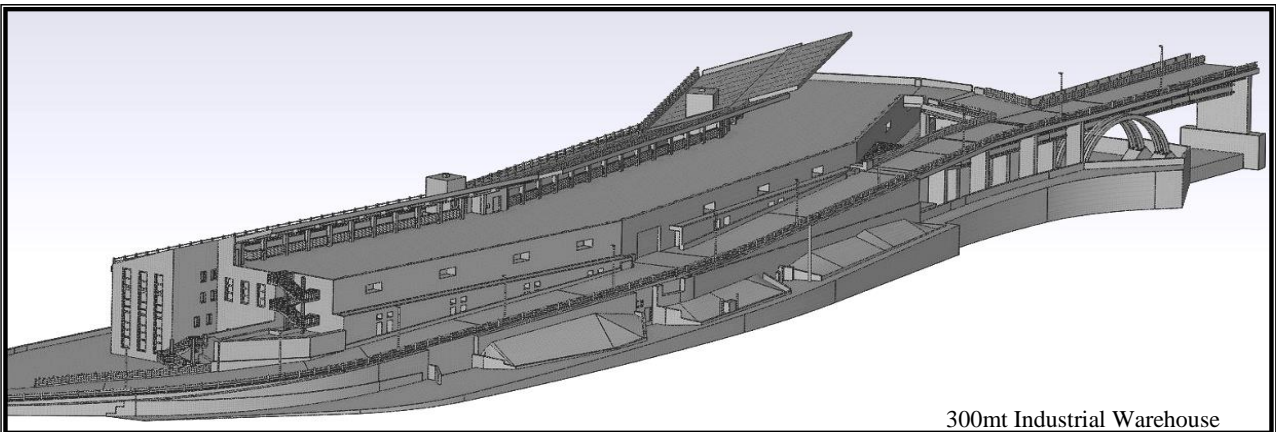
8mt Aircraft



54mt Yacht Hull Reverse



20mt yacht bridge



300mt Industrial Warehouse